

IMAGE PERFORMANCE

LCD Panel	Active Matrix With In Plane Switching (IPS)
Picture Size (H x W)	21.6 x 13.5 inches (550 x 344 mm)
Viewing Area (Diagonal)	25.5 inches (649 mm)
Pixel Pitch	0.287 mm
Resolution (H x W)	1920 x 1200 (WUXGA)
Luminance	500 cd/m ²
Contrast Ratio	800:1
Aspect Ratio	16:10
Number of Colors	16.8 Million
Color Gamut	100% (SMPTE 296M, HD Standard)
Viewing Angle	178°
Response	5-12 ms
Gamma	1.8, 2.0, 2.2, 2.4, 2.6, Color Corrected Video Gamma, PACS

GENERAL

Power Requirements	22 – 24 Volts DC
Power Consumption	115 Watts (typical)
Dimensions (W x H x D)	24.7 x 16.8 x 3.95 inches (627 x 427 x 101 mm)
Weight	18.2 lbs (8.27 Kg)
Temperature	Operating: 0 to +40°C (+32 to +104°F) Storage: -20 to +60°C (-4 to +140°F)
Humidity	Operating: 20 – 85% RH Storage: 5 – 85% RH
Mounting	100 mm VESA

SUPPLIED / OPTIONAL ACCESSORIES

Supplied: Power Supply, Video Cables (S-Video, BNC, VGA, DVI), AC Cord

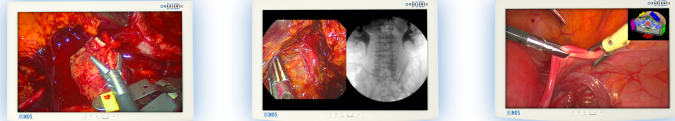
COMPLIANCE & CERTIFICATIONS

UL 60601.1; EN 60601; MDD 93/42/EEC; CE; CAN/CSA C22.2 NO. 601.1
Class I Medical Device; RoHS

INPUT FORMATS

Format	Input (Digital)	Input (Analog)	Horizontal Frequency (kHz)
576/50i (PAL)	SDI, DVI / Fiber	Comp, S-Video, RGBS, YP _b P _r	15.625
480/60i (NTSC)	SDI, DVI / Fiber	Comp, S-Video, RGBS, YP _b P _r	15.734
576/50p	DVI / Fiber	SOG, RGBS, YP _b P _r	31.250
480/60p	DVI / Fiber	SOG, RGBS, YP _b P _r	31.469
720/50p	HD-SDI, DVI / Fiber	HD-RGBS, HD-YP _b P _r	37.500
720/60p	HD-SDI, DVI / Fiber	HD-RGBS, HD-YP _b P _r	45.000
1080/50i	HD-SDI, DVI / Fiber	HD-RGBS, HD-YP _b P _r	28.125
1080/60i	HD-SDI, DVI / Fiber	HD-RGBS, HD-YP _b P _r	33.750
1080/50p	DVI / Fiber	HD-RGBS, HD-YP _b P _r	56.2
1080/60p	DVI / Fiber	HD-RGBS, HD-YP _b P _r	67.3

MULTI-MODALITY IMAGING



INPUTS

DVI / Fiber	DVI-D / LC x 4
HD-SDI, SDI	BNC, 75 Ω
HD-RGBS, RGBS	BNC x 5, or HD-15, 0.7 Vp-p ± 6db, 75 Ω
HD-YP _b P _r / YP _b P _r	BNC x 5, or HD-15, 0.7 Vp-p ± 6db, 75 Ω
VGA	HD-15, 75 Ω
Sync-On-Green (SOG)	BNC, 75 Ω
S-Video	DIN-4, or BNC x 2, 0.7 Vp-p +6/-3db, 75 Ω
Composite	BNC, 0.7 Vp-p +6/-3db, 75 Ω

CONNECTIVITY

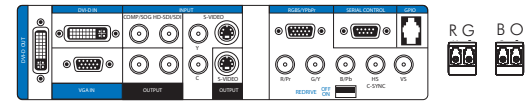
OUTPUTS

DVI	DVI-D
HD-SDI, SDI	BNC
HD-RGBS, RGBS	BNC x 5, or HD-15
HD-YP _b P _r / YP _b P _r	BNC x 5, or HD-15
Sync-On-Green (SOG)	BNC
S-Video	DIN-4
Composite	BNC

CONTROL INPUTS

Serial Remote	D-sub 9pin, RS-232C
GPIO	RJH-4, TTL

INPUT / OUTPUT CONNECTOR PANEL



USER CONTROLS - ON-SCREEN MENU

Primary / Secondary Input Selection, PIP Window Size / Swap, Brightness, Contrast, Hue, Saturation, Gamma, Sharpness, RGB Gain, Backlight Level, Horizontal & Vertical Position, Phase, Frequency, DPMS, Auto-Source Select, Scaling, Overscan (Up to 25% Overscan), Five Programmable User / Modality Settings Profiles

MULTI-MODALITY INPUT COMBINATIONS

	SECONDARY INPUT										
	HD-SDI	SDI	HD-RGBS	RGBS	HD-YP _b P _r	YP _b P _r	Y/C	Comp.	VGA	DVI	SOG
HD-SDI											
SDI											
HD-RGBS											
RGBS											
HD-YP _b P _r											
YP _b P _r											
Y/C											
Comp.											
VGA											
DVI											
SOG											